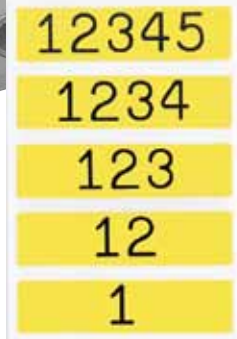
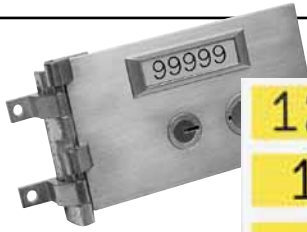


# S.D. Numbers and Plates

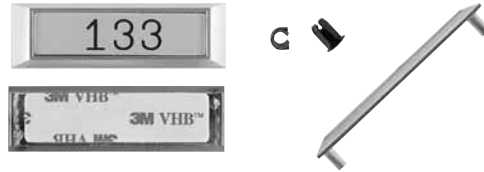


DL-1-Blk lettering/  
gold label

DL-1B-White lettering/  
black label

### Diebold Match

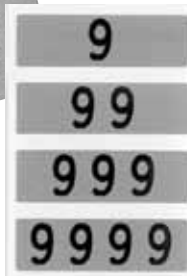
Labels with up to 6 numbers/letters.  
Plates available with pins & clips or  
adhesive backs



Labels Black  
White Type

### Mosler Match

Labels with up to 4 numbers/letters.  
Plates not necessary. (Labels go over  
old numbers).



Labels Gray  
Black Type

### LeFebure Match

Labels with up to 4 numbers/letters.  
Plates available with pins & clips or  
adhesive backs



DIEBOLD	C555	H886
A129	D303	K232
B345	E777	O113
W261	F444	P444
I478	G353	T777
J146	Q696	U315
L501	R886	V987
M111	S232	X635
N222	Y132	Z967

Alphabet  
sequences  
also  
available.

- 1 Specify Plate design and attachment preference (specify quantity).
  - 2 Specify Number Sequence (labels are delivered in rolls).
- To Re-number Doors, Just place label over old numbers
  - See price list for part number and pricing.